



## Bosesman's rainbowfish

*Melanotaenia boesmani*

### Habitat:

Ajamaru lakes of Irian Jaya



## Clown loach

*Botia macracanthus*

### Habitat:

Indonesia (Sumatra and Borneo)



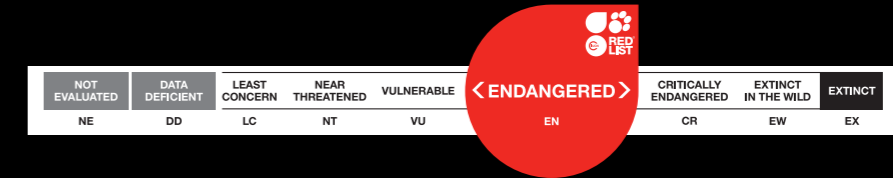
## IUCN Red Data List symbols

To illustrate how endangered some of the fish in this aquarium are, we have used the IUCN\* red data list symbols system.

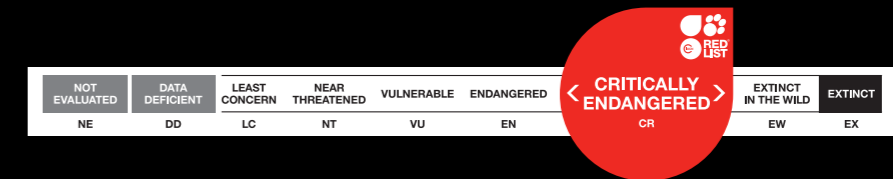
\* The International Union for Conservation of Nature



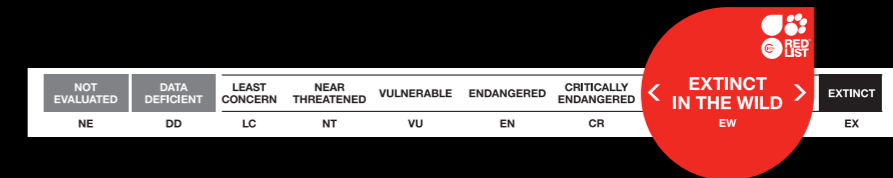
A fairly high risk of becoming extinct in the wild



A very high risk of becoming extinct in the wild



An extremely high risk of becoming extinct in the wild



Only survive in captivity



## Blue rainbowfish

*Melanotaenia lacustris*

### Habitat:

Only Lake Kutubu, Southern Highlands of New Guinea.





## Fly river turtle

*Carettochelys insculpta*

### Habitat:

Ponds, rivers, lagoons and estuaries in southern New Guinea, Irian Jaya and Northern Australia



## Dragonfish

*Scleropages formosus*

### Habitat:

Rivers of South East Asia

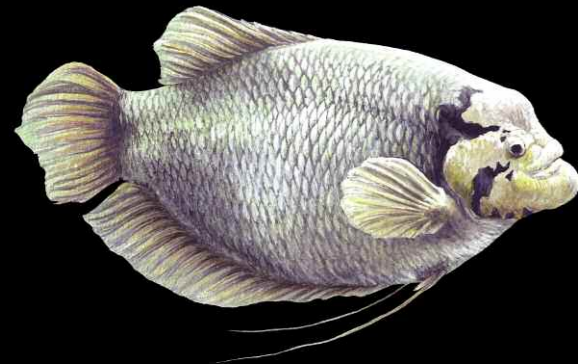


## Silver shark

*Balantiocheilos melanopterus*

### Habitat:

South East Asia



## Giant gourami

*Osphronemus goramy*

### Habitat:

Still and slow moving rivers and lakes of South East Asia and China

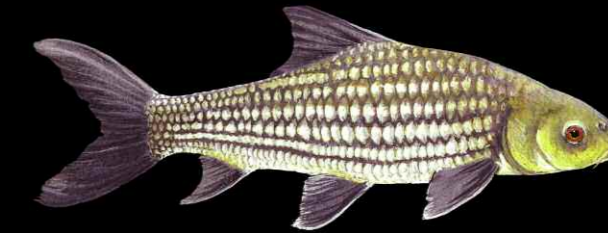


## Pangasius catfish

*Pangasius hypophthalmus*

### Habitat:

Thailand, South East Asia



## Flat bellied barb

*Probarbus julienni*

### Habitat:

Rivers and streams of South East Asia





### Banded headstander

*Leporinus fasciatus*

#### Habitat:

Amazonian flooded forest



### Emperor tetra

*Nematobrycon palmeri*

#### Habitat:

Amazonian tributaries



### Black widow tetra

*Gymnocorymbus ternetzi*

#### Habitat:

Amazonian tributaries



## Feeding symbols used in this aquarium



This animal eats other animals like fish, shrimps, and molluscs



This animal eats both plants and animals



This animal eats plants



This animal feeds by sieving tiny animals/plants from the water



This animal/plant uses sunlight to create its own food from carbon dioxide